



TONSLEY SKI TEAM
TOUR DE TIGNES 2006

TOUR GUIDE



CONTENTS

THE TEAM	2
L'ESPACE KILLY	14
THE RESORT	16
THE CHALET	17
TOUR KIT	18
EQUIPMENT HIRE	20
LIFT PASSES	21
SKI SCHOOL	21
TOUR RULES	22
FLIGHT DETAILS	23
DON'T FORGET	24
TEAM CONTACTS	25
AVANT-SKI SOIRÉE	26



THE TEAM



Simon Woolf

Tour connections:

Tonsley: one whole quarter
Married Floody's cousin... lucky boy.

As Woolfy declared on a cold and miserable day in Chamonix, he is really only a fine weather skier these days. This March trip will undoubtedly see him at his best therefore. Although quite how good his best is remains open to debate.

Living in denial of all things 'Top Gun', Woolfy will struggle with Eighties Day.
Ringleader of the notorious 'Ring of Fire'.



Giles Tebbitts

Tour connections:

No less than 1,628 entries to Tonsley caption competitions (per competition). A recent Time Team recruit.

A well-established member of the London Comedy Circuit, Giles is our resident stand-up comedian.

In this case though, Giles has been signed up entirely on the basis of his linguistic aptitude. Following several trials of his 'Gibberish' language, most notably in Rome where it was used to great effect in defusing verbal conflicts, Giles appealed to Westminster to instigate a campaign for Gibberish to replace Esperanto as the European Union's common-language.



James Strenner

Tour connections:

Floody's flatmate and victim of household Tonsley paraphernalia.

Emma's bad choice.

This is not the first time Strenner has been associated with two planks. As a child, his father told him that he was as thick as two short ones. Nevertheless, Strenner takes to snow like a hippo does to mud: slowly, with a waddle and spends most of the day submerged in it. Known to befriend children on chair lifts before chucking them off.



Emma Smith

Tour connections:

Floody's flatmate and admirer of household Tonsley paraphernalia.

Strenner's lucky catch.

Emma is relatively new to planks (bar, of course, the two short thick ones she goes out with). She took to skis for the first time in 2005 but, alas, under the coaching of Strenner. Her quest this year then must be to undo his bad teaching and learn from Floody. Emma will look elegant on the slopes even if head-first in the deep. A reluctant, but inevitable, Tonsley Totty.



Lucilla Sharpe

Tour connections:

Introduced care of Pedro, and thankfully his saving grace. Previously a Time Teamer.

A far more useful bet for those seeking medical attention than the fraud of Pedro's honorary 'doctorate'. That said, with an important skiing agenda to maintain, she's probably more likely to plonk you down in the cinema room for the week than cast your broken leg.

Apparently, "quite a good skier, alas not as good as me" (Peter Bullock, 2005). We doubt it.



Lina Raether

Tour connections:

Tonsley Totty (Ireland).

The reason we let Darty come.

Having recently lived in the Emerald Isle, Lina comes to the tour in tip-top Guinness drinking form.

Judging by her choice of man, she must be tolerant, great fun and happy to live life on the edge (Pedro Sliders – take note!). By the looks of things, she has a slightly better dress sense than her other half too.

Apparently a boarder. Oh well – can't have everything then.



Jodie Morgan

Tour connections:

Tim's best asset.
Tonsley Totty (Thailand).

Jodie is a welcome addition to the tour, not least because she's one of the few people on this earth that can control Tim.

A bit of a dark horse on the slopes, we suspect – claims to be “pretty crap”, but probably just a cover up.

No stranger to an evening tippie or two and likely to keep the party going long into the night.



Claire Loftus

Tour connections:

Rupert's cousin.

We admire Claire's blind faith. She has no idea what she has really let herself in for. Will she join the realm of nutters that frequent the Tonsley circuit or will she in fact kill her cousin for dragging her into this madness? One way or another, the pressure's on.

Famous for her role in that notorious banned Tango ad (see photo). Yes, you'll know when you've been tangoed! You've been warned... cover your ears.



Ed Irvin

Tour connections:

Another long term victim of Woolfy's childish ideas and therefore relatively unperplexed by all things Tonsley. One-time resident of the infamous No.10 Tonsley Place. Now found relative peace again over the road as Pedro's flatmate. Devout Time Teamer.

Eddie I likes his skiing and is likely to be a difficult customer to please with a CV that includes some of the finest resorts on our planet. In addition to skiing though, Ed's hobbies include “reading” Loaded, commiserating with Chester City and fly catching (see photo). Only dietary requirement is “plenty of beer”. Truth be told, Ed will drink everyone else under the table. No contest.



Tim Flynn

Tour connections:

School buddy of Rob and Floody and unsurprised observer of Tonsley developments. Jodie's patient.

With no limits to Tonsley resource, we deployed our resident Army officer to Tignes with his troops in January to recce the joint. Tim now claims he's “had enough bombing down the slopes for one season” and is ready to “mince about on the baby slopes”. Hmmm.

Tim is probably the only man on earth that can rival Woolfy for volume. In fact, it has been suggested that Tim should ski with an avalanche warning sign strapped to his back. Best to take heed of the warning in advance though and let him ski alone.



Andrew Flood

Tour connections:

A quarter of the Tonsley Events tomfoolery, considerably more of the brains.

Floody will happily listen to your tour commendations (while Woolfy will handle your complaints). Likes a quiet mountain and inclined to force his point by using his poles as spears, attacking mountain undesirables. Yes, a dubious skiing style but should run well in the Eighties session. Often wears his mother's trousers.

Also known as Gollum, Dobbie and Jar-Jar. How wude!



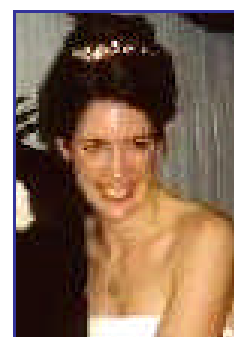
Victor Fauvelle

Tour connections:

Anna's significant other.

At school with Rupert, Brutus and Joe. (That's blown it.)

Renowned for his verve and splendour, Victor skis with panache. He is also notorious for taking huge lunches. Might rival Eddie I as tour drinker, but only if he can successfully manage to navigate the slopes après-luncheon. Stay out of his way in the afternoon as he has been known to wipe out entire ski classes without noticing the impact. Unstoppable. Unforgivable. Bloody dangerous. Nice one.



Anna Fauvelle

Tour connections:

Victor's boss.

Tonsley Totty at the ready.

Will impress in a 'Crystal Carrington' ski outfit. Be warned though, she is the only girl in a family of six – and her brother's aren't small!

Famous in the French Alps for her incredible resource when the Chamonix triple-chair lift broke down just short of the peak in 1998: determined not to waste an inch of the slope, Anna monkey-barred the final 800 yards to the top along the cable. Genius.



Ness Dutton

Tour connections:

Ant's wife/mother.

Tonsley Time Teamer. Tonsley Totty (Germany).

One to watch, Ness. With the kids at home and husband back at the chalet, Ness is on a free run.

Thrives on chorus singing and, in particular, 'The Sound of Music'. Should therefore feel very much at home in the mountains and dressed in curtains. Yes, happy days: the hills are alive with the sound of Ness.

(If Woolfy ever shuts up.)



Ant Dutton

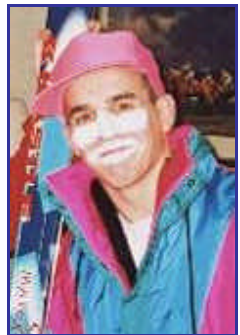
Tour connections:

Ness' problem.
Tonsley Time Teamer.

Ant has openly declared that he has no intention of skiing on this tour but will be putting his resource to "good use" in "helping" the chalet girl.

Not sure she'll be so taken with his take on 'ring of fire' (beans induced).

Then again, not sure he'll be so taken when he discovers the chalet is actually run by an elderly gay couple. Let's see how many cakes Ant bakes then!



Andrew Dart

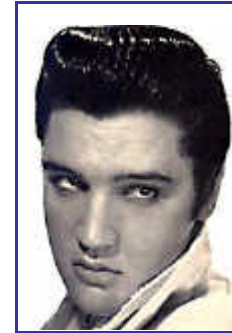
Tour connections:

Rob's old uni-housemate and dedicated Tonsley party supporter.
Lina's project.

Looking forward to Eighties Day as an excuse to wear his everyday ski wear without drawing verbal abuse.

Odds on favourite to win the contest.

Darty's hobbies include sailing naked round Lake Windermere and eating Pedigree Chum with a trowel.
Nice.



Pete Bullock

Tour connections:

Tonsley Veteran. Eddie I's flatmate. A doctor of sorts, albeit not as useful as his girlfriend Lucilla.

AKA Dr Pedro Sliders, a name that originates from Pete's ski technique and his incredible ability to slide into turns without cutting an edge. Rumour has it, he once skied down a 6 kilometre run without once using his edges.

These days, more likely to be seen sitting alone cross-legged on a precipice.

Renowned Elvis impersonator and self declared "gigantic ponce". A little less conversation and a little more action, please Pete.



Robert Bruce

Tour connections:

Tonsley: one whole quarter.

Once known as 'Waddy' – now more likely to be found stuck in one. Nevertheless, Rob will come to the party with all the gear. A snowboard for fresh powder, a snowboard for icy pistes, a snowboard for state occasions and a snowboard for parking his arse on the slope. Needless to say, with each board there will be matching jackets, trousers and lippie together with an assortment of sunnies to match a variety of snow and visibility conditions. All-in-all, 624 varied combinations of kit. And that's just one of many kit obsessions... don't get him started on his collection of hedge trimmers. Cantankerous old git.

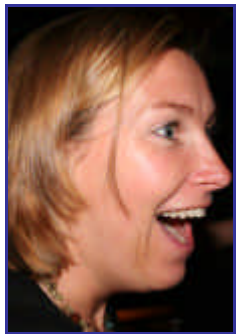


Paddy Bruce

Tour connections:

Tonsley Events have exclusive rights to host his 21st birthday party in 2018 (sign up now in the Future Events section).

Paddy's first shot at skiing will undoubtedly show up a number of apparent old-timers here. Let's hope he takes after his mother and not his ageing Uncle Rob. Indisputably the tour's 'YT' and will no doubt impress in this department where the generations that have gone before him have failed. Fearless fella and cheeky monkey. Stay high and let him go first.



Niki Bruce

Tour connections:

Tonsley: one whole quarter's other half. Ever indebted to Tonsley for the event where she found her man. Tonsley Totty (Canada).

A bit like Liz Hurley, Niki has enough outfits for three changes a day. She's a bit accident prone – we recommend a helmet (and brown knickers!). Has been known to appear in alpine Jacuzzis with a see-through Tonsley Totty top. Hence the request for the chalet's hot tub. Once parked her Smart Car in the Thames – not so smart!



Joe Bruce

Tour connections:

Another quarter of Tonsley. Georgie B's other half (who, incidentally, has been left behind to look after newly born Joe Junior!).

Skiing ponce – show, not skill. So much so, that he can often be found skiing in a kilt. Fortunately, as an avid snow-plougher, Joe can't muster the speed to make this a problem for easily-shocked, dainty skiers. That said, the wind did once catch his kilt on a drag lift although the observer declared "nothing to report". Likely to be central to all forfeit appointments, but strangely never take one himself. Manipulative – be warned.

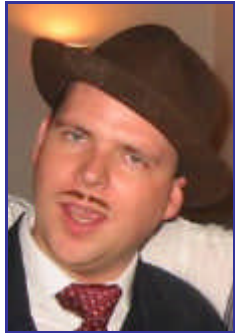


Christian Bruce

Tour connections:

Joe's niece, Rob's sister, Floody's cousin and Paddy's mum, she's connected to all the best bits. Tonsley Totty (Menorca).

Has the unique ability to be able to ski with her bum two inches off the ground – a tactic she devised to minimise the pain of the fall. Despite this, she has the ability of a Boa Constrictor to get herself into positions that will make your eyes water. Don't, for goodness sake, challenge her to the cornflake packet game. An insatiable appetite to giggle and a first-rate chocolate fool sucker! Clearly, lots to learn here.



James Brotherton

Tour connections:

Occasional guest at Tonsley parties – and always the last to leave.

At school with Joe.

Riding out to Tignes on a pink ticket from his wife, Brutus is on a free reign and therefore likely to be little unpredictable, certainly uncontrollable and generally insubordinate.

Has since got rid of his camp moustache but apparently still skis with very limp wrists. Eighties outfit will be interesting – if he understands the concept and doesn't turn up in his MCC bufty trilby, blazer and slacks.



Rupert Bell

Tour connections:

Another of Joe's old school cronies.

An enthusiastic new Time Team recruit.

Rupert signed up to the Tonsley Time Team for a "quiet weekend away", turning down tickets to Twickenham in the process. He got quite the opposite but was clearly persuaded that a Tonsley Ski Tour was going to be worth any such similar sacrifice, signing up in full on the day of return. Bit of an unknown quantity on the slopes – cards held close to his chest. Apparently he skis like he has a walnut stuck up his arse – hoarding little squirrel! Usually the last one up. Rather partial to muffins.



KILLY

MAP



THE RESORT

The resorts of Val d'Isere and Tignes are, in anybody's book, two of the finest ski stations in the world. Don't kid yourself that we're heading for a pretty alpine village though. Tignes is purpose-built around French architecture. Turn a blind eye to the aesthetics, however, and it is clear why people choose Tignes.

At 1,850m and 2,100m high, Val d'Isere and Tignes have more problems with getting rid of snow than they have acquiring it in the first place.

Linked together as L'Espace Killy, the resorts cover 25,000 acres and offer 200 miles of prepared piste (the longest run is 7 miles long!). There are over 100 lifts including the superfast funiculaire which covers 1,500 metres in 6 minutes – no time wasted on lifts. All-in-all, a phenomenal variety of slopes for all grades of skier and boarder.



We will be staying in Tignes Le Lavachet which is the lower part of the town, closest to the Val d'Isere valley. Just a short walk away is the first lift up in the morning.

Other known resort activities and facilities include:

A fitness centre, swimming pool, tennis courts, para-gliding, hand-gliding, skidooring, snow shoe expeditions, off-piste guiding, husky dog sledding, ice climbing, heli-skiing, skating on the lake and ice-diving beneath the lake!

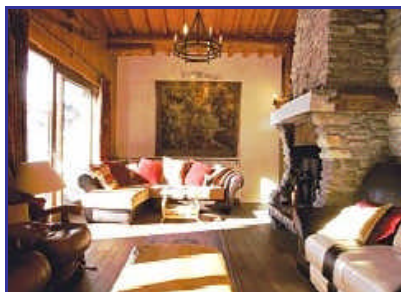
Check out www.tignes.co.uk/otheractivities.htm for these and more.



THE CHALET

eeee

Chalet les Tavaillons, Tignes Le Lavachet



- 4-star chalet in Le Lavachet area of Tignes
- 100 metres from the lifts and 200 metres from the bars
- Breakfast, Afternoon Tea, Four Course Dinner included
- ...with unlimited wine (sorry Ed, that's dinner, not breakfast)!
- All bedrooms have twin beds and en-suite bathrooms
- Sauna with jet shower
- An 8-person hot tub
- Home cinema room

We have tried to get everyone first choice on room preferences (bath / shower...etc) and match snorers with heavy sleepers! Bear with us on arrival as we whip round and badge up the rooms to fit the allocation.



TOUR KIT

We have put together a load of kit which is available on the website: www.tonsleyevents.co.uk/kit. There is now a facility to pay by card on the site but, if you prefer, you can snail mail a cheque to Floody: 5 Hove Court, Raymond Road, Wimbledon, SW19 4AG.

PLEASE ENSURE WE HAVE YOUR ORDER BY 25th FEBRUARY AT THE VERY LATEST.

The Official Tonsley Ski Team Tour De Tignes 2006 Microfleece

£23.40



(Camp mannequin not included)

Henbury superlight microfleece. Contrast bound trim around zip neck, collar and hem. Open style cuffs. Drop tail. Fabric weight: 280gsm. Durable casual top and ideal for March skiing!

Text reads:

TONSLEY SKI TEAM
TOUR DE TIGNES 2006

We hope that everyone who can will order one of these. It is the official team top, but also a very useful bit of kit for the slopes! We've achieved a healthy discount from the suppliers and, remember, these are priced entirely at cost!

Choice of colours: Navy Blue with Powder Blue trim / Vintage Red with Navy Blue trim
XS (34/Ladies 8-10) | S (36/Ladies 12) | M (38/40/Ladies 14) | L (42) | XL (44/46) | XXL (48)



OPTIONAL EXTRAS!

The following are also available in the website Kit Bag section... again, **all at cost.**

Tonsley Ski Team Beanie **£6.50**

By Beechfield. Light microfleece beanie in navy.
Embroidered text:

TONSLEY SKI TEAM
TOUR DE TIGNES 2006

One size fits all.



Tonsley Ladies Semi-Fitted Drill Shirt **£25.90**

By Front Row. 97% Cotton / 3% Elastane crew shirt.
Pre-shrunk washed fabric. Contrast inner placket.
3/4 length sleeves with contrast inner turn-ups. Collar
with contrast under. Locker patch. Contrast side tabs
and vents.

(pink caps not available – but speak to Darty!)

Ladies: XS (8) | S (10) | M (12) | L (14) | XL (16)



Tonsley Tipped Pique Polo Shirt **£14.90**

By Kustom Kit. Three horn button placket. Contrast
inner placket and tipping on collar and cuffs. Side vents.
Twin needle hem.
(Ladies version is tailored fit.)

Men: S (38) | M (40/Ladies 14) | L (42) | XL (44) | XXL (46/48)
Ladies: 10 (32) | 12 (34) | 14 (36) | 16 (38)



Tonsley Totty Top **£free***

For those who don't have one yet, but have always
wanted one (Emma).

Get famous: www.tonsleyevents.co.uk/totty

* free on condition you get a photo taken at an international landmark.



EQUIPMENT HIRE

We have sourced some significant discounts on equipment hire which can be obtained by booking online in advance of the trip. The following are some options available to you:

	Resort	Ski Holiday Extras	World Ski	Best saving
SKIS & POLES				
Beginner	£59	€56 (c. £38)	£34	£25
Intermediate	£74	€81 (c. £57)	£43	£31
Advanced	£87	€102 (c. £72)	£56 – 65	£31
SKIS, POLES & BOOTS				
Beginner	£91	€95 (c. £67)	£46	£45
Intermediate	£112	€122 (c. £87)	£58	£54
Advanced	£124	€145 (c. £103)	£75 – 86	£49
SNOWBOARD				
Intermediate	£74	€81 (c. £57)	£55	£19
Advanced	£87	€102 (c. £72)	£64	£23
SNOWBOARD & BOOTS				
Intermediate	£110	€122 (c. £87)	£75	£35
Advanced	£124	€145 (c. £103)	£86	£38

- While Ski Holiday Extras seem to be more expensive than World Ski, they do provide some useful guidance for selecting skis and boots which the first-timers amongst you might find worth the read at least. They also offer helmets.
- When booking equipment, please make sure you specify Tignes le Lavachet (it's a long way to the other parts of Tignes!).
- We will be arriving on the afternoon of 19th March but unless you are a complete keeno, you are better off starting your hire from 20th for 6 days (ie. to 25th inclusive).
- Of course, you can wait until you get there. There will be reps, no doubt, selling lift passes and ski hire on our arrival. However, we have it on good authority that these online prices will be hard to beat.
- **We recommend you make advance bookings by the end of February:**

www.skiholidayextras.com
www.worldski.co.uk



LIFT PASSES

	Resort	Ski Holiday Extras	World Ski	Best saving
Espace Killy lift pass (6 days)	£144	€191 (about £135)	£134	£10

- Quoted lift pass prices are for Espace Killy (Val d’Isere AND Tignes valleys) – we’d recommend you go for this pass over the Tignes only pass that is also available for a bit less.
- You will probably need a photo... best to bring one, just in case.
- **We recommend you make advance bookings by the end of February:**

www.skiholidayextras.com
www.worldski.co.uk



SKI SCHOOL

Talking amongst the group, it is clear that some of you may appreciate some tuition.

Although ski school can be booked in advance in a similar way to the above, we recommend that you wait until we gather out there to establish who’s of what standard and how many/which days you’d like to team up in a class for...etc.

For those wanting to learn to ski without edges, Pedro will be offering morning sessions. Apply on arrival.

If you want to check out ski schools before we leave try any of the following links :

www.esf-tignes.com www.333school.com www.skischoolinternational.com
www.snowcool.com www.evolution2.com www.ski-ecole.com/tignes



TOUR RULES

1. All Tonsley tourists will fall under the jurisdiction of the following rules between the hours of 12pm Sunday 19th March and 12pm Sunday 26th March. Roles of ‘Chairman’ and ‘Weights & Measures’ (W&M) will be created to administer the daily court session (see below). These roles will rotate around the group and all pronouncements should be respected.
2. The Chairman’s role includes the chairing of the court session, calling for witnesses and defendants and ultimately the pronouncement of guilt or innocence. The Weights & Measures role is one of helping the Chairman to administer the court and then, should the defendant be found guilty, to decide upon the fine. All fines should be in the ‘spirit of the tour’.
3. Daily court sessions will be held at dinner and all are expected to attend.
4. Tourists will have the opportunity to share others’ mishaps/amusing stories with the group. Once the defendants have had an opportunity to defend themselves, the group will be invited to vote on which of the defendants should be awarded:
 - The position of ‘Dick of the Day’ – for acts of gross stupidity
 - ‘The Prize of the Shiny Trombone’ – for acts of pure class
5. The court’s decision is final and there is no appeals system! The awards of *The Prize of the Shiny Trombone* and *Dick of the Day* will hold a number distinguished roles, which will apply from appointment until 1am the following morning.
6. Simon Woolf and Andrew Flood will adopt the positions of Chairman and W&M for the first evening and thereafter the Chairman and W&M positions will be held by the winners of the previous evening’s *The Prize of the Shiny Trombone* and *Dick of the Day* respectively. The positions will offer their incumbents full immunity from that evening’s prosecutions.
7. Wednesday 22nd March will be ‘Retro Day’ in which all tourists will adorn 1970s and 1980s ski wear. A special court session will be held on that evening and the court will award both prizes and punishments as appropriate to those tourists who exceed or fail to meet expectations!
8. Each evening will feature one ‘five minute mayhem’. The nature and time of the 5MM will differ each night. Simon Woolf will be responsible for co-ordinating the event. Through this medium rules of the court can be amended at his discretion.



FLIGHT DETAILS

- **Outbound:**
 - 19 March
 - London Gatwick (to Chambery)
 - Flight Number: AEU-255
 - Departs: 07.45 (GMT)
 - Arrives: 10.35 (local time)
- **Inbound:**
 - 26 March
 - Chambery to London Gatwick
 - Flight Number: AEU-256
 - Departs: 11.35 (local time)
 - Arrives: 12.25 (GMT)
- **Please make sure you are at Gatwick by 06.15 (ouch – sorry!) to check-in on the Sunday we leave.**
- Any problems on the day, please call Floody or Woolfy on 07939 287340 or 07957 146685 respectively.
- Closer to the time, we will liaise by email to establish group efficiencies in getting to the airport.
- Transfer times between Chambery and the chalet are supposedly 1½ – 2 hours.
- Baggage allowance is 20kg per person. Skis may incur an extra charge (although it doesn't appear that anyone is bringing any).



DON'T FORGET

- Passport
- EHIC – the new card that has replaced the E111 – if you haven't already been sent one, the helpline is 0191 218999. You can apply online at www.dh.gov.uk (type "EHIC" into the search box). Allow 7 days minimum to receive it.
- Travel insurance with winter sports cover
- Any receipts/contracts you have for advance online bookings of ski hire and lift passes.
- Euros
(Wine is included with evening meal, but I believe other drinks are not. There will be one night that we do not eat in the chalet. Lunch is likely to be at a restaurant of your choice on the mountain. Ski Hire/Lift Passes will use the bulk of your spending money unless you've booked online in advance – see pages 20-21. Otherwise, there shouldn't be much else to pay for.)
- Retro ski-kit (70s/80s) – (There will be one day, weather dependent, where we adorn retro ski kit. Prize for the best, forfeit for lousy/no effort... see Tour Rules on page 22!). Try your attic, eBay, Oxfam and your elderly aunt.
- Walkie-talkies if you have any
- Sunnies
- Sun-block
- Swimming cossies (hot tub and sauna)
- Any DVDs you can't do without (cinema room)
- A CD – choice to reflect the year in which you left school
- iPods (we'll have speakers)
- Tonsley Totty tops (ladies!)

If you think we've missed something, please email and we'll let the rest know:
skiing@tonsleyevents.co.uk



TEAM CONTACTS

Rupert Bell	07767 648606	rupert.bell@btinternet.com
James Brotherton	07710 352884	james.brotherton@lineone.net
Christian Bruce	07812 775681	chingu@talktalk.net
Joe Bruce	07788 184337	joe.bruce@tonsleyevents.co.uk
Niki Bruce	07774 177111	nikiday@hotmail.com
Paddy Bruce	Dial 100 and ask for "Paddy"	
Robert Bruce	07768 256789	robert.bruce@tonsleyevents.co.uk
Pete Bullock	07985 006990	peter.bullock@london.bsipb.com
Andrew Dart	07753 718933	andrew.dart@sfx.com
Anthony Dutton	07958 793873	anthonydutton@btinternet.com
Ness Dutton	07790 020958	ness@down2earth.co.uk
Anna Fauvelle	07831 645484	afauvelle@chapmantaylor.com
Victor Fauvelle	07831 645484	vfauvelle@dnfa.com
Andrew Flood	07939 287340	andrew.flood@tonsleyevents.co.uk
Tim Flynn	07720 771221	timflynn7@hotmail.co.uk
Ed Irvin	07813 774505	edward.h.irvin@accenture.com
Claire Loftus	07904 103316	c.m.loftus@btopenworld.com
Jodie Morgan	07812 046141	jodiemorgan@pdd.co.uk
Lina Raether	07845 686418	tigerlina@hotmail.com
Lucilla Sharpe	07768 288542	lucillasharp@doctors.org.uk
Emma Smith	07763 101909	emmansmith@gmail.com
James Strenner	07810 655736	strenner_james@lilly.com
Giles Tebbitts	07985 710982	giles.tebbitts@gvagrimley.co.uk
Simon Woolf	07957 146685	simon.woolf@tonsleyevents.co.uk



AVANT-SKI SOIRÉE



Saturday 4th March

7.30pm

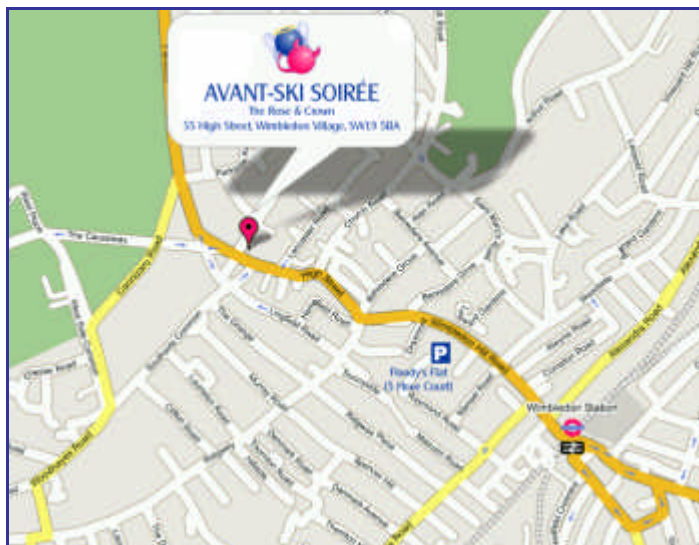
Private Marquee in the courtyard of The Rose & Crown

55 High Street
Wimbledon Village
SW19 5BA

We have taken the private marquee in the courtyard behind the pub. Rest assured, with the heaters going, it's the warmest part of the pub!

We'll aim to eat at about 8pm so please try and get there pronto. Food and drink is very reasonable given the private setting... about £6 - 9 for a main.

Should be a great night to gather the troops. Non-skiing other halves welcome.



BY CAR:

- From central London... turn off A3 at Tibbett's Corner and travel 2 miles down Parkside into Wimbledon.
- From M25 J10, come off the A3 at the Esso garage and follow signs for Wimbledon Village.
- Watch your parking – can be restrictive – you may prefer to park at Floody's place and walk 5 minutes – give him a call.

BY TRAIN/TUBE:

- District Line comes into Wimbledon – 30 minutes from Paddington.
- Overland trains are frequent from Waterloo/Clapham Junction and take 18/7 minutes respectively.
- Turn left out the station and head up the hill for about 5 minutes... you'll come into the village at the top. Keep going along the village high street, forking left at the Dog and Fox, continue past Est Est Est (blue lights), and the Rose and Crown is on the right, just before the Monument at the edge of the Common.
- Should be about 10 minutes walk in total... there'll be cabs outside station if you can't be bothered.
- Last trains out are in the small hours of the morning.

In true Tonsley tradition, a selection of tour photos will be published on the website shortly after the trip:

www.tonsleyevents.co.uk



www.tonsleyevents.co.uk